

Public Engagement Board

COVID-19 Programme Team

CLT Lead: Eleanor Roaf, Director Public Health Trafford

11 August 2021

Data surveillance update paper to Public Engagement Board

Report Summary:

This paper provides an update on the current data position for COVID-19 within Trafford and provides comparative information with other GM localities. Data insights into any potential trends are provided based on best available public health information and intelligence available.

Overview of the current position:

- There were **691** confirmed cases during the week ending Wednesday 04 August. The highest number of daily cases during the past week were reported on **Monday 02 August** with **121** cases.
- Our 7-day case rate has decreased slightly to **291.1/100k** from **308.4/100k** in the previous reported week. Our rate of reduction has slowed, and indeed our most recent data suggests that our case rate is increasing slightly .
- We have seen a continued reduction in Trafford's testing rate over the past week (currently at **476.8/100k**), similar to the North West (**481.7/100k**) but lower than the England (**523.6/100k**) average. We have seen little change in Trafford's positivity rate over the past 7 days (dropping slightly to **8.9%** from **9.2%** in the previous week), similar to the North West average (**8.7%**) but higher than the England average (**8.0%**).
- Rates remain highest in 15-29 year olds (increasing to **711.9/100k** from **627.0/100k** in the previous week), increasing most for 19-24 year olds (over **1000/100k**). We have seen a slight rise in rates for people aged 45-59.
- Rates for Trafford's 60+ residents have dropped to **92.6/100k** from **107.5/100k** in the previous week. This is the age group where we have most concern about serious illness, although the good news is that the number of residents 75+ testing positive has dropped.
- Case rates have dropped in 12 wards, increased in 8 wards, whilst unchanged in 1 ward.
- Ward rates remain highest in the west of the borough, as both Davyhulme West and Davyhulme East are the only two wards with rates greater than **400/100k**.

- Trafford's case rate is similar to the North West (**283.4/100k**) and England (**283.9/100k**) average. The sharp rate reduction that each GM borough was experiencing has now started to stabilise. Trafford has the 5th lowest case rate across the 10 GM boroughs (highest for Salford, at **389.1/100k**).
 - There were **228** COVID-19 admissions during the week ending Sunday 18 July. There were **257** COVID-19 admissions during the previous week (Including Manchester University Foundation Trust, Salford Royal Foundation Trust, Stockport Foundation Trust, and Warrington & Halton Teaching Hospitals Foundation Trust).
-

Along with the rest of Greater Manchester, Trafford was seeing a rise in its case rate throughout May and June, peaking in early July. We then started to see a sharp reduction across the region. More recent data, however, suggest that the reduction in cases is starting to level off. The majority of Trafford's cases are made up of the delta variant.

The percentage of Trafford residents (above 18) given at least 1 vaccine dose remains high, above **82%**. However, uptake has slowed down since July 1st, increasing by only **2.2%**. The percentage of residents receiving both doses is progressing well, greater than **71%**, which is an increase of **11.8%** since July 1st. Initially, we were seeing a sharp rise in vaccine uptake for our young adult population (below 40 years) but this has now started to slow down. The percentage of residents administered at least 1 vaccine dose is at **71.5%** (increasing by **3.3%** since July 1st) for 30-39 year olds, and **64.4%** (increasing by **9.6%** since July 1st) for 18-29 year olds. All cohort groups 1-9 have been offered their first dose vaccination, over **90%** have received their first dose vaccine. This still leaves a substantial number of people unvaccinated and we are striving to reach at least **95%** in this group. Despite steady improvements, we are still seeing inequalities in vaccine uptake, with lower uptake in some of our more deprived areas and in some minority groups. We have seen rates increase in the Asian/Asian British population in the North of the borough (with uptake now greater than in the White population); rates remain lower in our black/Black British population. Our largest numbers of unvaccinated people are in our White population. We anticipate that inequalities in uptake will widen as the vaccine is rolled out to younger age groups and we are taking steps to reduce this risk. The North of the borough remains our major area of concern both for endemic covid and for serious illness following Covid. We are working with local community groups to increase uptake of vaccination.

As all lockdown restrictions have now been eased, we would like to emphasise the need for residents to continue to limit their social contacts, maintain social distancing, work from home wherever possible, stay outdoors, and keep good hand and respiratory hygiene habits at all times. We would strongly encourage all residents to take up the offer of vaccination as soon as they are eligible, and to remember the importance of the second dose in protecting themselves and others. While covid is generally not as serious in younger people, long covid can have a very significant impact, and vaccination protects against this too.

Contact Officer:

Name: Tom Seery, Public Health Data Surveillance Analyst

Tel: 07929876642

Email: Thomas.seery@trafford.gov.uk

1.0 Distribution of COVID-19 cases within Trafford

1.1 Early December saw a gradual increase in cases, rising more sharply near the end of the month and going into early January.

1.2 Trafford's cases started to drop following the national lockdown. We then started to see case rates stall over a 14-day period in mid-late February.

1.3 A drop in the number of daily cases during early March was followed by a 10-day period (March 21st - March 31st) where daily cases increased, increasing our 7-day case rate to greater than 70/100k on March 31st.

1.4 April saw a steady flow of cases, reporting, on average, between 15-20 cases per day.

1.5 We started to see volatility in our weekly rates in late April, going into May, however rates remained below a rate of 60/100k.

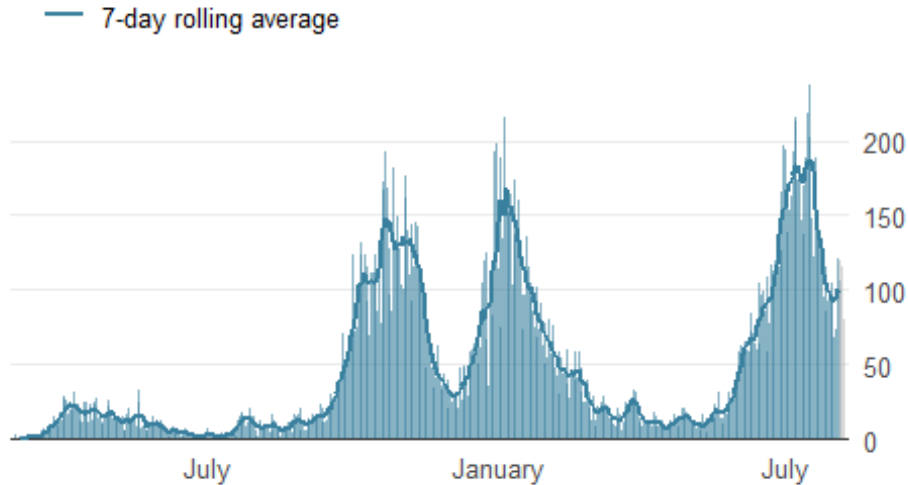
1.6 We started to see a sharp rise in positive cases from late May, continuing into July as more than 180 daily cases were being recorded for every 7-day period.

1.7 Mid-July saw a sharp reduction in Trafford's case rate, dropping below 300/100k, whilst less than 100 daily cases were being recorded for every 7-day period.

1.8 More recent data indicates that the downward trend has stalled, and we are now seeing a slight rise in cases, with over 100 new cases being diagnosed each day.

Figure 1. Epidemic curve of daily confirmed new cases

Trafford, 02 March to 06 August 2021



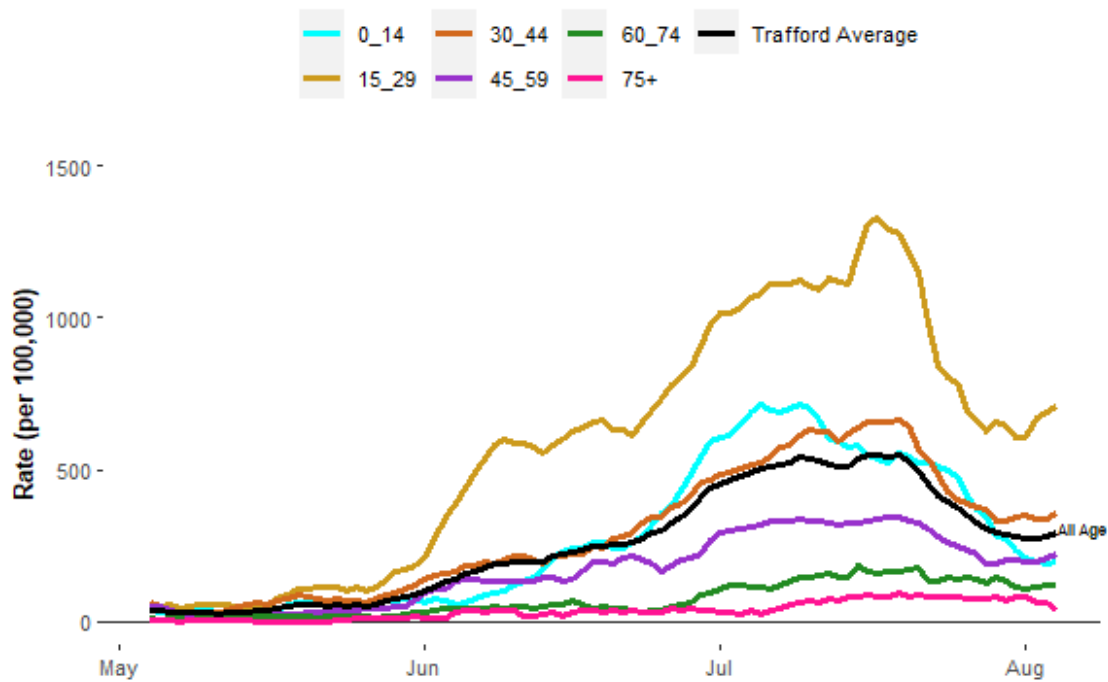
1.9 Case rates have increased for 2 of Trafford's age groups (15-29 & 45-59 year olds) during the most recent week. Rates have reduced most for 0-15 year olds (dropping to **195.0/100k** from **345.9/100k** in the previous week).

1.10 Rates remain highest for residents aged 15-29 (increasing to **711.9/100k** from **627.0/100k** in the previous week), particularly for 19-24 year olds within this age group who have seen their case rate increase above **1000/100k**.

1.11 We have seen a slight rate reduction for residents aged 60+ during the most recent week, dropping to **92.6/100k** from **107.5/100k**. There has been little change in the number of 60-74 year olds testing positive, however the number of positive cases among residents 75+ has decreased.

Figure 2. Age-Specific case rate per 100,000 residents (7-day moving)

Trafford, 06 May to 04 August 2021



1.12 Trafford’s ‘White’ ethnic group, as of week ending August 04, contribute to the highest number of cases (**506**), followed by the ‘Asian / Asian British’ ethnic group (**50**).

Table 1. Case count and incidence per 100,000 population by ethnicity

Trafford, 29 July to 04 August 2021

Ethnic_Group	n	Rate
Other	13	590.9
Mixed	20	331.6
Asian / Asian British	50	278.2
White	506	261.0
Black / Black British	14	214.1

2.0 Geographical spread of COVID-19 in Trafford

2.1 Rates have decreased for 12 wards, increased for 8 wards, and remained unchanged for 1 ward during the most recent week. We continue to see cases spread

across the borough, however rates are lowest for wards in the south of the borough (besides Timperley).

2.2 Case rates remain highest in Trafford's west locality, as both Davyhulme West (**429.6/100k**) and Davyhulme East (**429.3/100k**) have the two highest ward rates in Trafford. Rates for both of these wards remain similar to the previous week.

2.3 The wards of Bowdon (**-54.8%**) and Ashton upon Mersey (**-51.4%**) have seen the biggest rate reduction, whilst Timperley has seen the biggest increase (**+78.3%**) during the most recent week.

3.0 Testing in Trafford

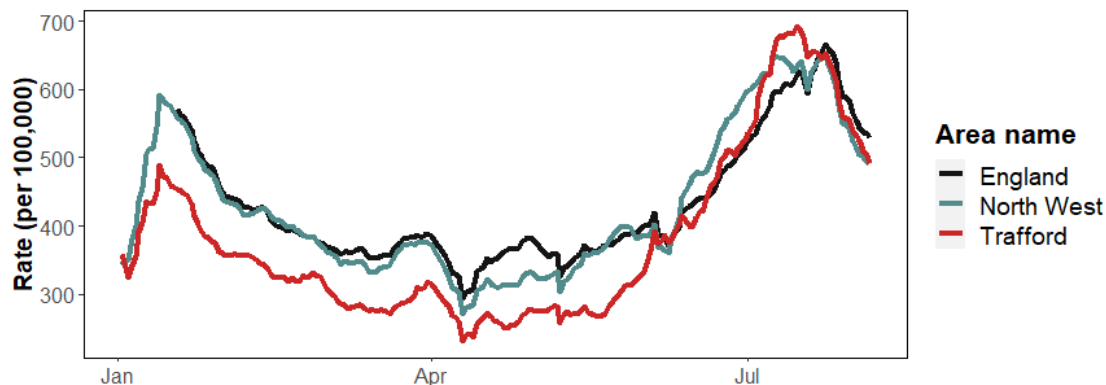
3.1 Over a 7 day period, ending August 04, the majority (**94.4%**) of COVID tests were conducted in our pillar 2 sites, consisting of all out-of-hospital testing sites. 39 cases were reported from pillar 1 sites.

3.2 Figure 3 shows that, after reaching a peak testing rate of **690/100k** in mid-July, we have seen a sharp reduction in Trafford's testing rate over the past 2 weeks, currently at **476.8/100k**. This is a similar trend to what is happening across the rest of the North West.

3.3 As of August 03, Trafford's 7-day positivity rate sits at **8.9%**, unchanged from the previous week and above the North West (**8.7%**) and England (**8.0%**) average.

Figure 3. Daily testing rate (7-day average): England, North West, & Trafford

Trafford, 02 January to 05 August 2021



4.0 Comparative data of COVID-19 cases within the local authorities of Greater Manchester

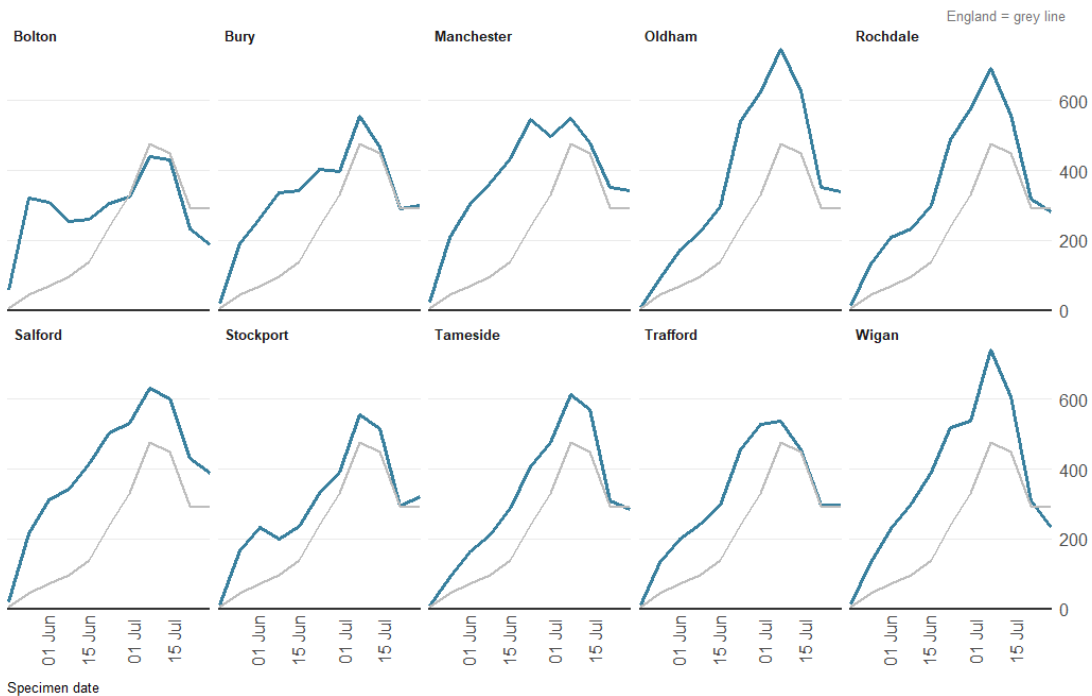
4.1 As presented in figure 3, regional case rates started to rise throughout May and June.

4.2 For each of the 10 GM boroughs, case rates peaked in early July, reaching as high as **700/100k** in some boroughs.

4.3 Case rates across the region started to drop throughout July, however more recent data shows that the rate reduction has started to level-off, similar to the England average.

Figure 4. Weekly incidence per 100,000 population by local authority

Greater Manchester, 29 July to 05 August 2021

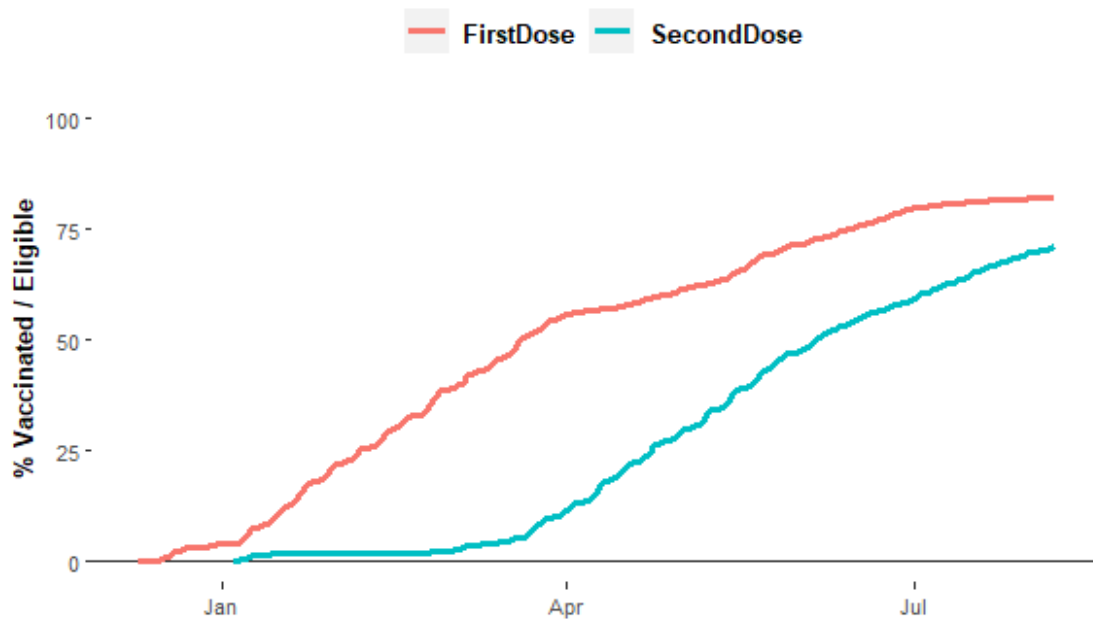


Vaccinations

- The total percentage of Trafford residents (Aged 18+) administered their first vaccine dose on **Saturday 07-08-2021** was **82.2%**.
- The total percentage of Trafford residents (Aged 18+) administered both vaccine doses on **Saturday 07-08-2021** was **71%**.

Figure 4. Running total of first and second dose vaccines for Trafford residents (18 years and above)

Trafford, 09 December to 07 August 2021



Source: COVID-19 Situational Awareness Explorer